

MYRIAM MARBE

PAVANE PASTORALE AUX OISEAUX I

pentru cembalo (sau orgă)

Schäfers Pavane mit Vögeln I

für Cembalo (oder Orgel)

Entstehungsjahr: 1981

Digitalisat enthält die autographe Partitur

Das Werk ist urheberrechtlich geschützt.

Das Herunterladen und der Ausdruck der Noten
für Aufführungen und für nicht-gewerbliche Zwecke
sind kostenfrei gestattet
unter Angabe des nachfolgenden Copyright-Hinweises.

**Copyright: Myriam Marbe Erben,
zur Verfügung gestellt vom Sophie Drinker Institut Bremen.**

Legende der von Myriam Marbe verwendeten Notationszeichen
und Werkeverzeichnis Myriam Marbe:
www.sophie-drinker-institut.de/myriam-marbe

Pavane - clavecini

MARRE

PAVANA

CLAVECIN

MM 1981/2

①

PAVANE PASTORALE AUX OISEAUX

Schäfers Pavane mit Vögeln

Myriam Harbe

♩ ≈ 96

(clavier)



Handwritten musical notation for the first system, consisting of two staves with treble clefs. The music features a melody in the upper staff and accompaniment in the lower staff, with various note values and rests.

Handwritten musical notation for the second system, consisting of two staves. A section of the music is enclosed in a rectangular box and labeled 'IMP' above it.

Handwritten musical notation for the third system, consisting of two staves. The first part is boxed and labeled 'de plus en plus dense' with an arrow pointing right. The tempo marking '♩ ≈ 96' is written above the second part.

Handwritten musical notation for the fourth system, consisting of two staves. The tempo marking '♩ ≈ 72' is written above the first part, and 'IMP * ♩ ≈ 96' is written above the second part.

♩ ≈ 52 Equale ; noblement

Poco più mosso (♩ ≈ 72)

Handwritten musical notation for the fifth system, consisting of two staves. It includes dynamic markings such as 'p', 'mf', and 'mf' with accents. The tempo marking '♩ ≈ 52' is written above the first part, and 'Poco più mosso (♩ ≈ 72)' is written above the second part.

* rhythmische Variationen

MM 1981/2

(Parana-clavier)

2

Handwritten musical notation for the first system, featuring a treble and bass staff with various notes and rests.

♩ ≈ 63-66

Handwritten musical notation for the second system, including a treble and bass staff with notes and circled 'S' markings.

Handwritten musical notation for the third system, showing a treble and bass staff with notes and a key signature change.

♩ ≈ 106

Handwritten musical notation for the fourth system, featuring a treble and bass staff with notes and an 'IMP' marking.

Handwritten musical notation for the fifth system, including a treble and bass staff with notes and a '(-enchaîné!)' marking.

MM 1981/2



③

Parana (clavecin)

MM 1981/2



Pavane (ciavecin)

④

2/72 (rythme libre)

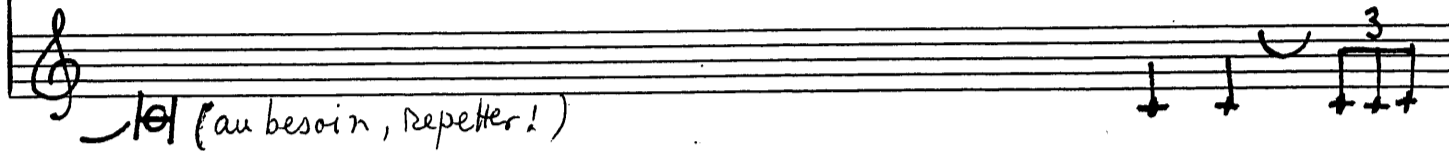
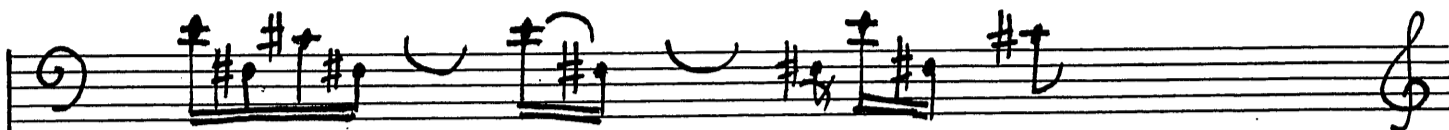
Luth

très doux, les doigts
presque plats

MM 1981/2

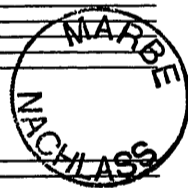


5 (Pavane - clavessin)



etc
de plus en plus rares
et un peu plus longues

Myriam Marbe
Bucuresti - Mainz 1981 (mai) -



MM 1981/2